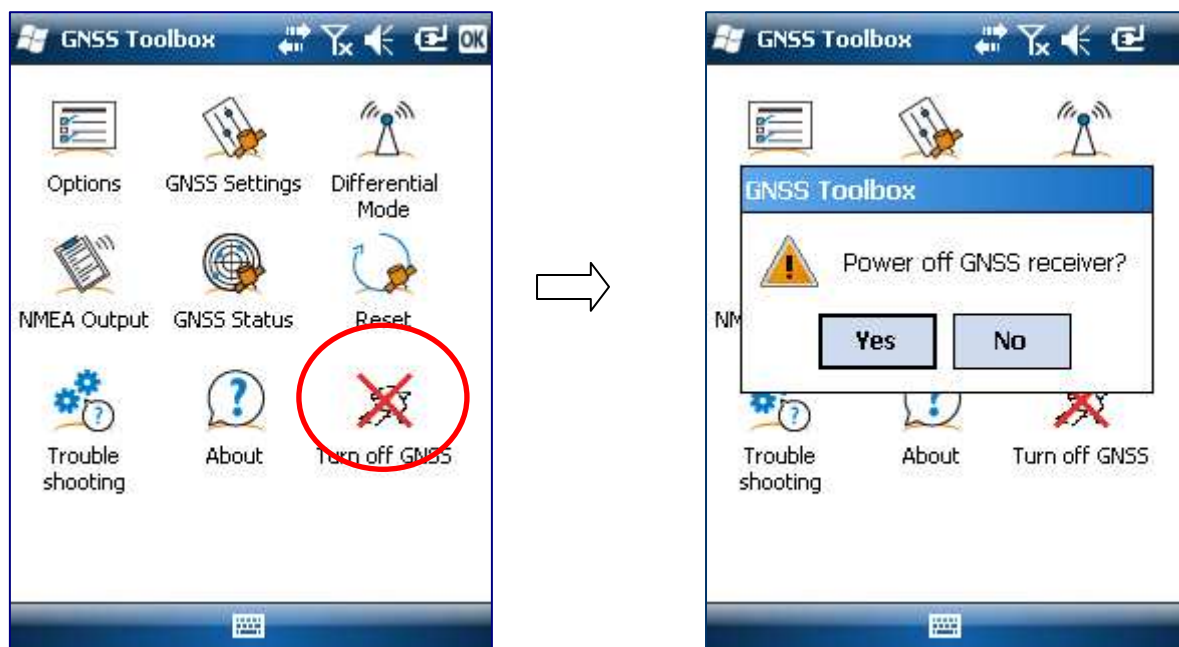


[Installing Ashtech Field Software  
on the MobileMapper 100, ProMark 100 and ProMark 200 platform](#)

[Application Note](#)

Loading or updating Ashtech field software such as MobileMapper Field or ProMark Field software require rebooting the device after the CAB installer has copied files and modified the registry. To prevent the risk of corruption of the registry, it is recommended to stop all the running processes and the background services that can lock the registry and prevent it to be flushed.

Ashtech Service Layer is one of these services running in background, so it is recommended to stop it before any upgrade or install of field software application. To stop the Service Layer, Start the GNSS Toolbox, and click the icon "Turn off GNSS" and answer "Yes".



Then check that the icon of the Service Layer disappears.



Now you can install your field software safely.